



DALES & PEAKS



11 Ashtree Close
, Matlock, DE4 3SJ

£425,000



11 Ashtree Close

, Matlock, DE4 3SJ

Situated in a highly desirable location, is this 3 bedroom detached property within close proximity of Matlock town centre. Offering 1227 sqft of accommodation over two storeys and benefitting from well presented gardens, ample off street parking and double garage.

The ground floor comprises; Entrance hallway, dual aspect living room with patio doors onto the rear garden, formal dining room and open plan dining kitchen. Separate utility room and downstairs WC.

The first floor comprises; Master bedroom with ensuite, two further double bedrooms with built in wardrobe space and family bathroom.

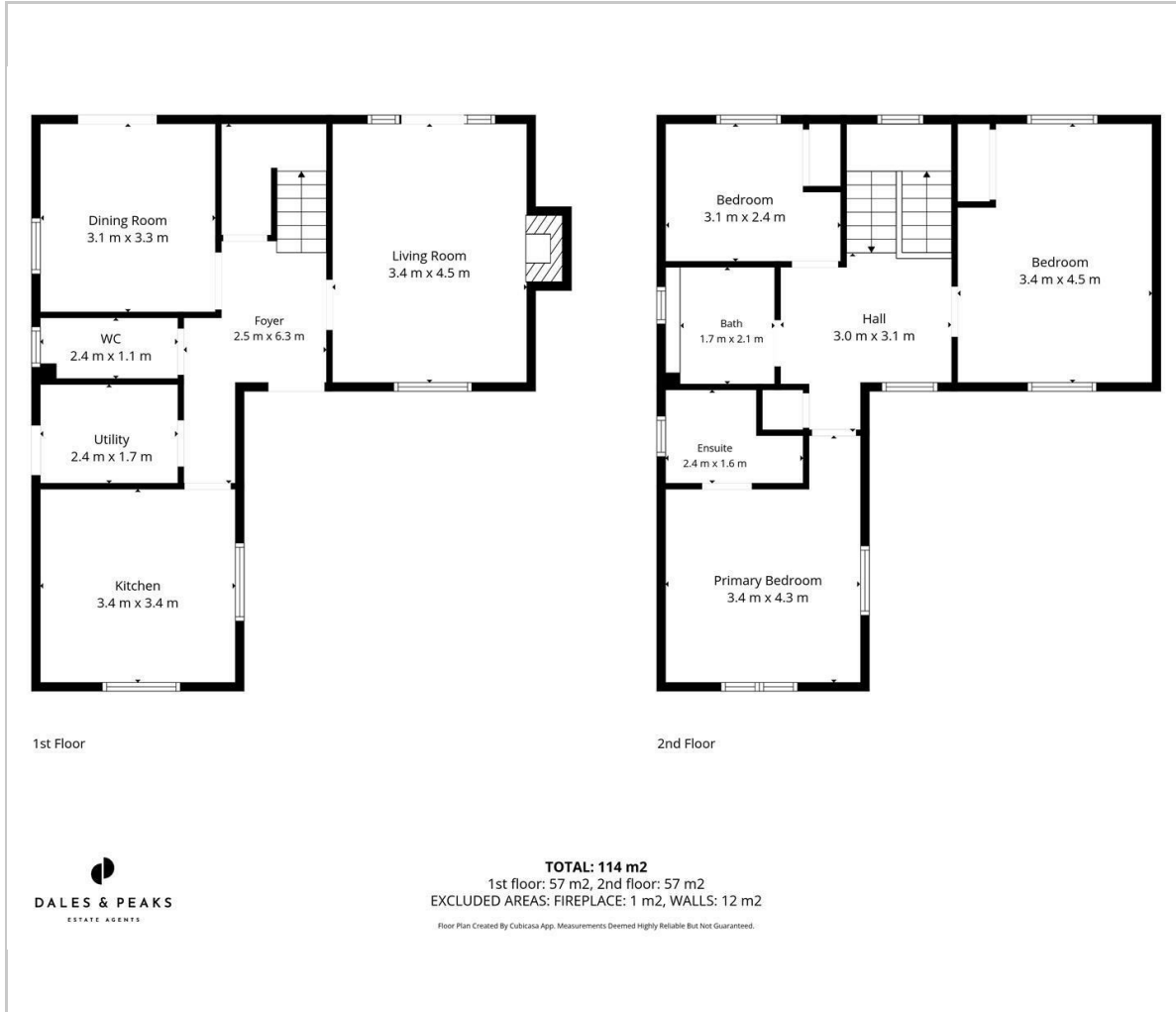


Dales and Peaks ForwardMove - Please read

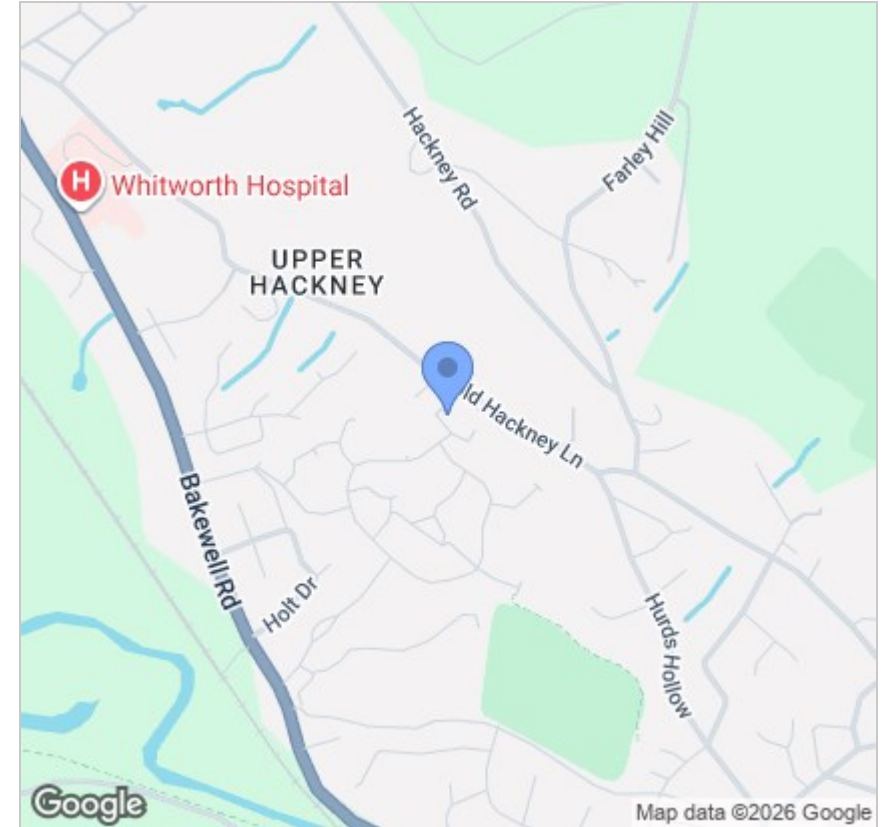




Floor Plan



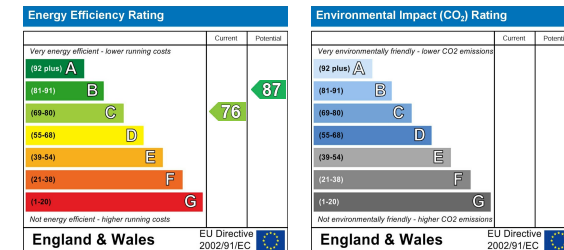
Area Map



Viewing

Please contact our Chesterfield Office on 01246 567540 if you wish to arrange a viewing appointment for this property or require further information.

Energy Efficiency Graph



These particulars, whilst believed to be accurate are set out as a general outline only for guidance and do not constitute any part of an offer or contract. Intending purchasers should not rely on them as statements of representation of fact, but must satisfy themselves by inspection or otherwise as to their accuracy. No person in this firm's employment has the authority to make or give any representation or warranty in respect of the property.



131 Chatsworth Road, Chesterfield, Derbyshire, S40 2AP
 T: 01246 567540

E: info@dalesandpeaks.co.uk
 www.dalesandpeaks.co.uk